

## QUALITY

Winnebago RVs are designed and built around you, with superior craftsmanship, advanced manufacturing technologies and steel-focused construction to enhance safety and reliability.

## INNOVATION

From groundbreaking RVs to game-changing features to the spacious floorplans made possible by our SmartSpace™ design, our heritage is unrivaled for continuous industry firsts in vehicle technology and design.

## SERVICE

Our carefully chosen dealers are supported by factory training and our advanced parts supply system, while owners benefit from excellent real-world customer support as well as 24/7 access to online technical information.

## BELONGING

Winnebago owners are a connected community – some of the friendliest, most knowledgeable and welcoming RVers you'll find anywhere.



© 2025 Winnebago

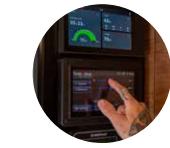
# REVEL SERIES



## BUILT FOR EXTENDED OFF-GRID STAYS

# STAY WILD. STAY LONGER.

The Revel® is equipped with the exclusive Winnebago Power Max system and industry-leading water management, which allows you to venture confidently off-grid for up to seven days.\*



### POWER WITH INTELLIGENCE

The Winnebago® x EcoFlow® 5-in-1 Power Hub Pro\*\* streamlines power management and optimizes energy performance while also saving space and reducing weight. System includes:

**Inverter** - Inverts 48V DC battery power to 120V AC for use with appliances and outlets, up to 3600W output

**Inverter Charger** - Inverts 120V AC shore power to 48V DC to charge the lithium house battery, up to 3000W input

**DC-DC Converter** - Converts 48V DC battery power to 12V DC power for RV appliances like water pumps, lighting, and accessories, up to 1000W output

**MPPT Solar Charger** - Boosts DC solar power to charge the lithium house battery

**Alternator Charger** - Boosts DC alternator power to charge the lithium house battery

**SEASON-EXTENDING INSULATION**  
When the temperature drops, the adventure continues, thanks to multi-layer gap-free 3M™ Thinsulate™ insulation coverage engineered and optimized for the Revel. Paired with honeycomb composite flooring for an added thermal break, comfort is yours.\*\*\*



### MORE FUN THANKS TO THE SUN

To provide additional off-grid energy, and lessen daily power loss from lights, water pumps, the refrigerator and other electrical devices, the Revel is equipped with 210W solar panels, with an option to add up to 1,600W through portable solar panels.



### HYDRONIC HEATING SYSTEM

The Revel is equipped with multi-zone heating and ambient sensors so you can control temperature in the front lounge and bedroom with added convenience of timers and setting schedules.



### POWER WITH MUSCLE

Our best-in-class Lithionics® GTO battery has up to 16,800Wh capacity and provides ample power for off-grid adventures. The large capacity means less time charging and searching for shore power.



### WATER ON THE GO

The Revel's new industry-leading 35 gallon freshwater tank is custom designed and molded by Winnebago to make the most of every square inch. Includes an independent heat loop sensor to help prevent freezing when temps drop below 40 degrees.



### CHARGE WHILE YOU DRIVE

By simultaneously pulling from dual alternators, this system optimizes high speed charging and provides enough power to run an air conditioner and/or charge batteries at idle. With just 2 hours of driving, the 48V high-output alternator allows you to fully charge both batteries.

### OUR BATTERIES HAVE A BRAIN

The Lithionics® external battery management system (BMS) streamlines communication between all of the different charging components for optimal charging. It also includes safety features to regulate and shut off the batteries if any issues arise.



\*Up to seven days of boondocking capability based on a full charge. Actual boondocking capability varies with conditions such as external environment, vehicle use, vehicle maintenance, and battery age and health.

\*\*Winnebago® x EcoFlow® 5-in-1 Power Hub Pro is exclusive to Winnebago motorhomes.  
\*\*\*Winnebago recommends following the winter use guidelines and winterization procedures outlined in your own's manual whenever camping in freezing conditions.



# TURN-KEY THRILLS.

If you're seeking the freedom and excitement that comes with off-road, off-grid travels, the new Revel is ready for action. It's the ultimate ready-to-go, go anywhere adventure van. Built with the robust power and accessory upgrades you need to travel boldly beyond the beaten path, and the convenience and comfort you need to truly enjoy the great *out there*.



## Take It Off-Road

Giving you the robust power you need for backcountry adventures, the Revel is built on the all-wheel-drive Mercedes-Benz® Sprinter chassis with a 4-cylinder turbo diesel engine and an overdrive transmission delivering over 330 foot-pounds of torque. Nothing will hold you back.



## Light Up The Night

The urge to explore doesn't end when the sun goes down. The Revel comes equipped with dual light bars that throw out 22,000 lumens. So no matter how remote your travels take you, you can safely see the trail ahead.



## Prepare For Adventure

When exploration calls, you need your stuff. And the Revel gives you the storage solutions you need to bring it along. The van-top cargo area not only has custom side rails to make sure everything stays safe and secure on the go, but a rear mounted ladder makes access simple and easy.



## Ready For Anything

The road less traveled isn't always the smoothest one. So to give you all the trail-grabbing grit you want, check out the custom performance wheel and BF Goodrich® all-terrain tire package. Plus, you can take advantage of the optional RAPTOR® protective coating to make your rig even more durable.



Floorplan Shown 44E



## Comfort. Convenience. Cool.

### Kick Back In Comfort

Whether the Revel is your homebase for ski, surf or sand, the modern multi-functional lounge delivers. Recline and relax in versatile split seating. A new wall-mounted table gives you the space you need to work remotely, relax with your crew or serve up an off-grid worthy feast.



### Cook Where You Want

An improved galley absolutely shines with more counter space, a portable cooktop, and plenty of storage. Keep the door open or take the cooktop out to the exterior drop down table for some al fresco action. Revamped cabinets with compression latches ensure doors and drawers stay put and reduce off-road noise.

### No Ordinary Wet Bath

Maximizing comfort and convenience, the bath doubles as a gear closet with a removable shelf and collapsible bins for greater customization. The new middle-split door allows more room to move. And just outside the bath is a new thermal privacy curtain, so you can block off the sleeping area to create two separate living spaces.



### Sleep Is Just The Beginning

In compact camper vans, multi-functional space is the key to comfort and convenience. The Revel's power lift bed sports our innovative WinnSleep® mattress technology to create a cozy, comfortable sleep space. And below the power lift bed? An upgraded gear garage with flexibility and durability to store all your gear, including new cabinet storage and multiple L-track bases.



# WELCOME TO THE WINNEBAGO LIFE

Owning a Winnebago changes everything. Sure, it starts with your RV, but it's really an interconnected experience of meeting and communicating with fellow travelers, learning about all the possibilities RV life holds, plus perks, tips and tools to make every adventure better than the last. Consider yourself invited.

Revel Rally Excursion // Green River, UT



## GoLife COMMUNITY

One of the best parts of owning a Winnebago product is the community of owners. Explore upcoming owner-organized events and join GoLife Community groups to connect with Winnebago owners. Then you never have to go alone.

## GoLife PERKS

The GoLife Perks program helps you maximize your RVing experience through access to special offers and discounts that make the RV lifestyle more affordable. With offers on tires, campsites, gear and more, members can save hundreds of dollars per year, allowing you to go more for less.



## GoLife BLOG

Get the inside scoop from fellow adventurers. Hear from Winnebago owners on topics like winter camping and how to RV with kids, recommendations on destinations, routes and gear, and how-to guides like choosing tires, you're sure to find stories that will help you imagine how you'll go.

### The Winnebago App

Adding to the perks of ownership, our app gives you easy access to how-to guides and videos, owner manuals and finding service, even if you're offline. We're here for you wherever you go.

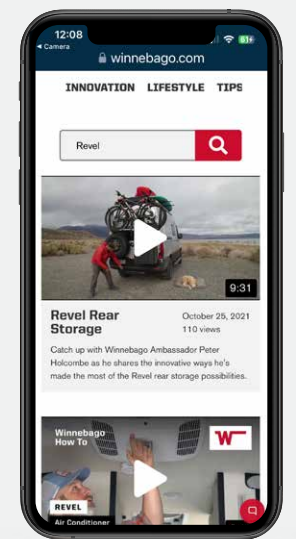


What do you need to know before you go?

And how does that cassette toilet work again?

You'll find the answers to these and many more questions in the Revel Video Library, a collection of informative and how-to videos that explains pretty much everything you need to know about the Revel.

From adjusting seats and lowering (or raising) the bed, to operating major systems, to plumbing and electrical basics — it's all here in the Revel Video Library.



SCAN TO ACCESS THE REVEL VIDEO LIBRARY



WINNEBAGO

# REVEL / Specifications

WEIGHTS & MEASURES	44E
Exterior Length	19'7"
Exterior Height <sup>1</sup>	10'
Exterior Width	7'5"
Awning Length	9'5"
Interior Height	6'3"
Interior Width	5'9.5"
Freshwater Tank Capacity <sup>2</sup> (gal.)	35
Water Heater Capacity (gal.)	Continuous
Cassette Toilet <sup>2</sup> (gal.)	5
Holding Tank Capacity - Gray <sup>2</sup> (gal.)	21
Fuel Capacity (gal.)	24.5
GCWR <sup>3</sup> (lbs.)	13,930
GVWR (lbs.)	9,050
GAWR - Front (lbs.)	4,409
GAWR - Rear (lbs.)	5,359
Wheelbase	144"
Sleeps <sup>5</sup>	2

## Optional Package Upgrade

Interior package upgrade includes Overlander interior décor, removable Chilwich® floor mats (cab and coach), and insulated window coverings

## Chassis

Mercedes-Benz® AWD Sprinter Chassis 2.0L high-output, turbo-diesel 4-cylinder, 9-speed automatic transmission w/overdrive  
4-wheel ABS brakes  
LED high performance headlamps  
Trailer hitch<sup>3</sup> 5,000-lb. drawbar/500-lb. maximum vertical tongue weight  
7-pin trailer wiring harness connector  
Spare tire

## OPTIONAL EQUIPMENT

Customized performance wheels and BF Goodrich® T/A® KO2 all-terrain tires

## Cab Conveniences

Heated steering wheel  
MBUX® touchscreen multimedia infotainment system w/navigation, Wi-Fi hotspot, intelligent voice control, and rear camera  
Mercedes me connect vehicle app

Heated cab seats w/single in-board armrest, adjustable lumbar support, adjustable headrest and slide, swivel, and recline  
Airbags driver and passenger  
3-point seat belts  
DISTRONIC PLUS® (adaptive cruise control)  
Power assist steering w/tilt and telescoping wheel  
Power mirrors w/defrost and turn signals  
Power door lock w/remote control  
Power windows  
12-volt powerpoints  
Sunvisors  
Applique package  
Rain sensor w/integrated wet wiper system  
Auto headlamps w/high beam assist  
Active braking assist  
Active lane keeping assist  
Blind spot assist  
Attention assist (driver alert)  
Traffic sign assist  
Dash charging station (wireless, 12V, and USB charge points)  
Digital rearview mirror  
Folding privacy shades for front and cab door windows

## Interior

LED ceiling lights  
Tinted dual-pane euro acrylic windows w/cassette shades  
Front overhead cabinet shelf (cab area)  
Systems monitor panel  
Deluxe powered ventilator fan w/rain cover  
RAM® Tough-Track™ mounts throughout  
Entry door assist handle w/Ram® Tough-Track™ mount  
Roof wiring access port  
Heavy duty vinyl flooring throughout  
Below floor storage (lounge)  
Forward facing lounge seat w/two integrated 3-point seat belts w/forward, recline, and slide adjustments  
Adjustable, removable table w/storage behind lounge seat  
120V, 12V, USB-A, and USB-C charging ports

## OPTIONAL EQUIPMENT

30" x 65" Front cab air mattress w/support base, cordless pump, repair kit, and storage bag

## Galley

High pressure laminate countertop  
Portable single burner induction cooktop  
3.0 cu. ft. (12V) single door compressor-driven refrigerator/freezer

Spice rack  
Galley drawer w/counter extension cover (induction cooktop storage)  
Stainless-steel sink w/single control faucet and pull-out sprayer

## Bath

31" x 26" Wet bath  
Shower w/wall surround  
(1) removable shelf  
Dual control faucet w/flexible showerhead  
Removable clothes rod  
Powered roof vent  
Robe hooks  
Shower curtain  
Tissue holder  
Swiveling cassette toilet  
Split bath door w/privacy panel extension  
(2) collapsible storage containers  
Mirror

## Bedroom

Powered roof vent w/rain cover (N/A w/air conditioner)  
Reading lights  
Power lift bed w/WinnSleep® technology and molded pockets w/zip storage below  
Under-bed gear garage storage w/strategically placed L-track tie downs  
(2) pocket storage nets

## Exterior

Side screen door w/magnetic closure  
Rear screen door w/blackout panel  
Porch light w/interior switch  
Driver side service light w/interior switch  
Fold-down exterior table  
Rear mud guards  
Rear mounted ladder  
Luggage rack w/custom side rails and front faring off-road lighting  
Tubular aluminum running boards w/ground effect lighting, clearance lighting, and integrated pet leash attachment

## OPTIONAL EQUIPMENT

Rack mounted powered patio awning w/Bluetooth® control

## Heating & Cooling System

Hydronic heating system w/multi-zone heating and LED touchscreen panel

## OPTIONAL EQUIPMENT

13,500 BTU A/C

## Electrical System

AC/DC load center/converter  
Coach battery disconnect system

Automatic dual-battery charge control  
30-amp. SmartPlug® power cord  
Winnebago Power MAX (8.4kWh Lithionics® lithium-ion battery w/dual alternator charging capability, Bluetooth® control and pack heating system, EcoFlow® Power Hub Pro (5-in-1 power management controller [3,600-watt inverter, inverter charger, DC-DC converter, MPPT solar charger and alternator charger], touchscreen interface, and 210-watts of solar

## OPTIONAL EQUIPMENT

(1) additional 8.4kWh Lithionics® lithium-ion battery

## Plumbing

Water center control panel includes all control valves, connection points, and exterior wash station (located inside right rear door)  
10' sewer hose  
On-demand water pump  
Heated gray water holding tank (below floor)  
Heated freshwater holding tank  
Galley drain pump  
Winterization package w/labeled valves, courtesy lights, and siphon tube

## Safety

LP, smoke, and carbon monoxide detectors  
Fire extinguisher  
Ground fault interrupter

## Warranty<sup>4</sup>

12-month/24,000-mile basic warranty\*

## FOOTNOTES

\*See your dealer for complete warranty information. All information is based upon the most recent data available. Visit the Winnebago web page - www.winnebago.com - for the most current product information.

- The height of each model is measured to the top of the tallest standard feature and is based on the curb weight of a typically equipped unit. The actual height of your vehicle may vary by several inches depending on chassis or equipment variations. Contact your dealer for further information.
- Capacities are based on measurements prior to tank installation. Slight capacity variations can result upon installation.
- Actual towing capacity is dependent on your particular loading and towing circumstances which includes the GVWR, GAWR, and GCWR as well as adequate trailer brakes. Refer to the chassis operator's manual of your motorhome for further towing information.
- See separate chassis warranty
- Sleeping capacity is the maximum based on a specific floorplan.

n/a Not Available

Not all items available in combination. See dealer for details. Because features, specifications, equipment, and options may vary from those highlighted here, the buyer is responsible for confirming with the dealer the features, specifications, equipment, and options included on their specific vehicle. In addition, Winnebago's program of continuous product improvement may result in changes to vehicle specifications, equipment, model availability, and price without notice.

Winnebago recommends following the winter use guidelines and winterization procedures outlined in your owner's manual whenever camping in freezing conditions.

## EXTERIORS



Selenite



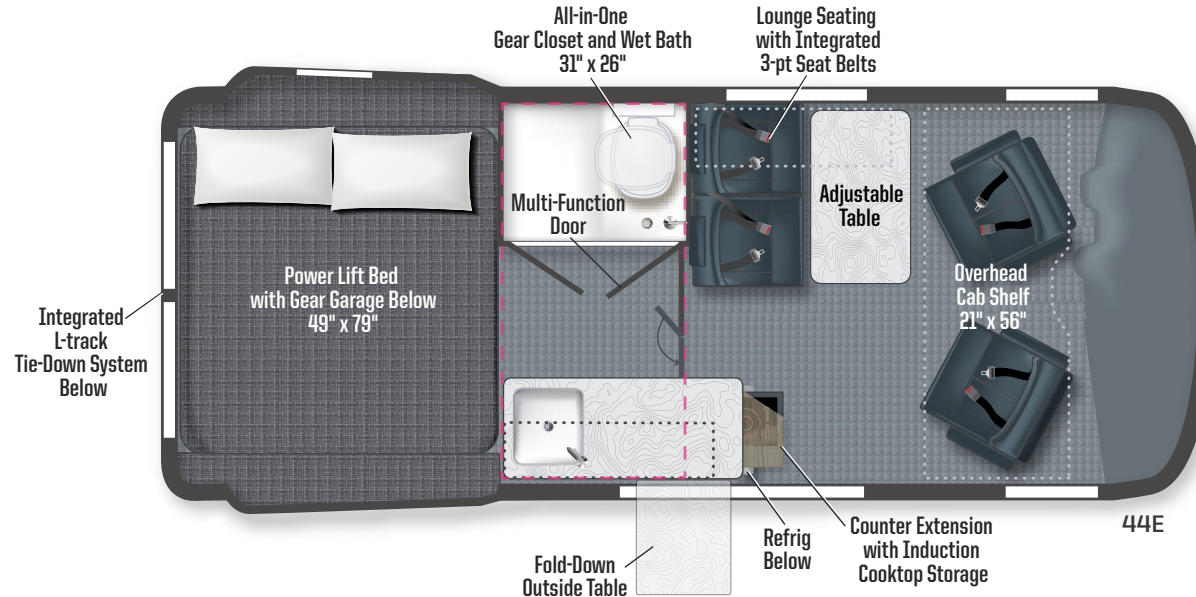
Selenite WITH RAPTOR®



Selenite WITH GRAPHICS + RAPTOR®

Other exterior colors available: Stone Grey and Silver Grey.

## FLOORPLAN



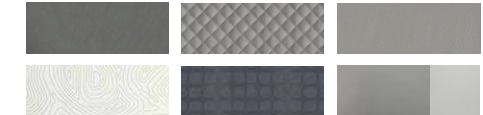
Dotted lines denote overhead storage area. Magenta dashed lines denote cross coach private bath area. Floorplans are representations only and are subject to change. Please contact a certified Winnebago dealer for more information.

## DECOR

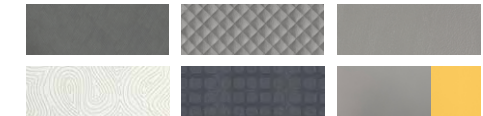
### Overlander



### Stealth Gray



### Solstice



Renderings shown. Actual product may vary.

# MEET THE REVEL SPORT

Meet the new Winnebago® Revel® Sport—an adventure rig that's ready to roll wherever the trail takes you. With tough off-road performance, off-grid power, and loads of gear space, you're always ready for boondocking thrills in the backcountry.



## Head Out. Stay Out.

Explore off-grid with confidence and comfort with the Revel Sport's Winnebago Power system, featuring the Winnebago® x EcoFlow® Power Kit Pro. This compact, efficient 48V system delivers reliable energy wherever adventure calls. With a diesel-fired hydronic heating system, optional A/C, and enhanced insulation, you're free to roam in any season.

## Designed For Comfort

The Revel Sport's flexible lounge seating creates an ideal space to relax after a long day of adventuring, and the 44C's side-facing sofa faces directly out the sliding van door, so you can take in all the stunning scenics. With two passenger seatbelts, discreet storage compartments and a removable pedestal table, this space is ready to flex to your needs.

## Built To Last

The Revel Sport's interior is built tough to match your adventures. With easy-to-clean surfaces, rugged vinyl flooring, reverse cove molding at cabinet bases, durable aluminum-framed cabinets, and secure, no-rattle latches that stay closed on bumpy roads—it's ready for anything. Bring it on.

## Gear Hauling Dream

The power lift bed not only transforms your bedroom area into a massive gear garage, it also provides easy access to the onboard lithium system and internal freshwater tank.

## Versatile Living

The galley flaunts its flexibility with an exterior table, removable counter extension and a refrigerator accessible from inside or out. Plus, a storable induction cooktop adds counter space alongside a stainless-steel sink.

## Optimized Shore Power

The Revel Sport's new SmartPlug® delivers safer, more efficient shore power. Its multi-point locking system clicks securely into place—no twisting or misalignment. With maximized electrical transfer, a watertight triple-seal design, and an LED power indicator, it's built for reliability. A flexible, easy-to-store cord ensures convenience, letting you focus on the adventure, not the connection.



Floorplan Shown 44C

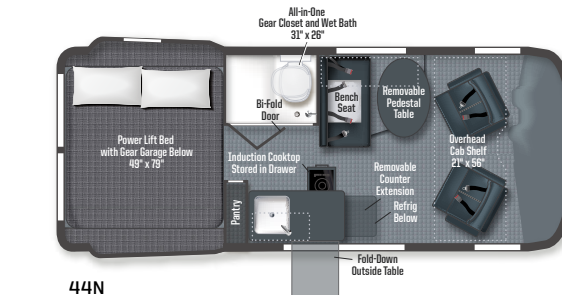
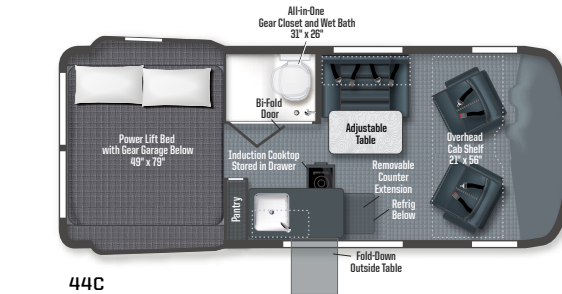


Floorplan Shown 44N

Weights & Measurements	44C	44N
Length	19'7"	19'7"
Exterior Height	10'	10'
Exterior Width	7'2.3"	7'2.3"
Awning Length	9'5"	9'5"
Interior Height	6'3"	6'3"
Interior Width	5'9.75"	5'9.75"
Freshwater Tank Capacity (gal.)	24	24
Water Heater Capacity (gal.)	Continuous	Continuous
Cassette Toilet (gal.)	5	5
Holding Tank Capacity - Gray (gal.)	21	21
Fuel Capacity (gal.)	24.5	24.5
GCWR (lbs.)	13,930	13,930
GVWR (lbs.)	9,050	9,050
GAWR - Front (lbs.)	4,409	4,409
GAWR - Rear (lbs.)	5,359	5,359
Wheelbase	144"	144"
Sleeps	2	2

Winnebago's® continuing program of product improvement makes specifications, equipment, model availability, and prices subject to change without notice. Published content reflects the most current product information at the time of printing. Please consult your dealer for individual vehicle features and specifications.

\*Winnebago recommends following the winter use guidelines and winterization procedures outlined in your owner's manual whenever camping in freezing conditions.



Note: Dotted lines denote overhead storage areas. Floorplans are representations only and are subject to change. Please contact a certified Winnebago dealer for more information.



## Exterior



SILVER GREY

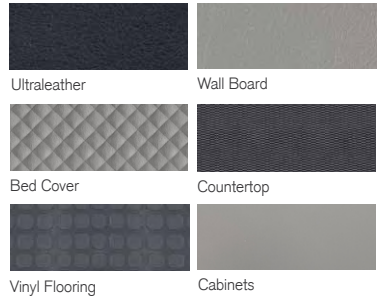


SILVER GREY WITH RAPTOR®

Other exterior colors available are: Selenite and Stone Grey. See website for more details.

## Décor

### INTREPID



**LAMESA RECREATION VAN**  
 LaMesaRV.com  
 800-496-8778



SCAN THIS QR CODE TO LEARN MORE ABOUT THIS MODEL